



RRG Fisheries Road SLK 10.24 - 13.61

Construction Environmental Management Plan

Prepared by:

Katherine Walkerden, Environmental Officer, BSc, MEnvSc
Julie Waters, Environmental Coordinator BEnvSc (Hons)

December 2023



1 Introduction

1.1 Project Context and Scope

The Shire of Esperance manages the largest road network of any local government in Western Australia, encompassing a total of 4,593 km of road. The Shire of Esperance has a long-term plan to progressively upgrade these roads.

RRG Fisheries Rd SLK 10.24 - 13.61 Project is to widening Fisheries Road to serve road safety improvements along Fisheries Rd SLK 10.24 - 13.61 road to improve road safety.

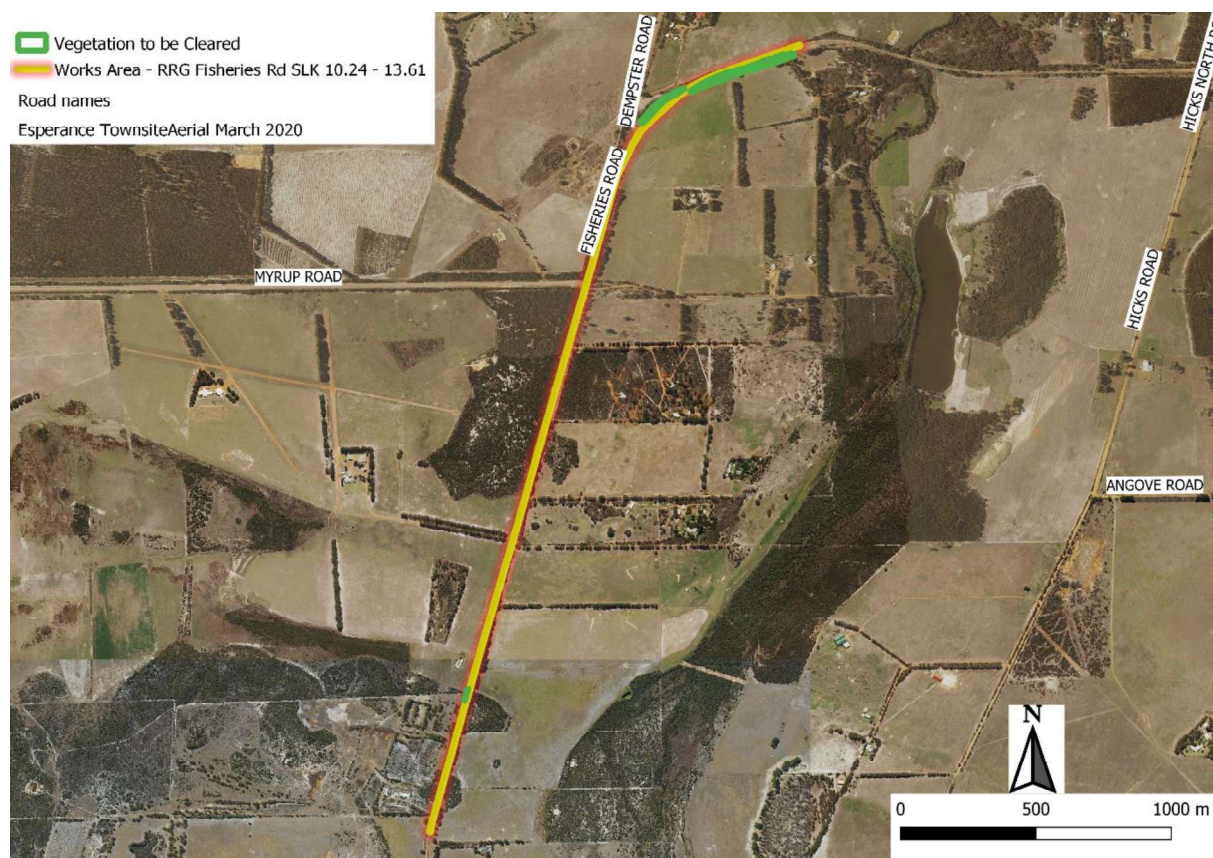


Figure 1: Map of RRG Fisheries Rd SLK 10.24 - 13.61

Work will involve clearing of vegetation, civil works, drainage and widening of a bitumen road surface. The total clearing footprint for will not exceed 0.86 ha.

The Project will require the clearing of native vegetation and a Native Vegetation Clearing Referral has been submitted to the Department of Water and Environmental Regulation (DWER).

1.2 Scope and Purpose

This Construction Environmental Management Plan (CEMP) has been developed to outline environmental management measures to be implemented by the Shire of Esperance and its contractors

during the RRG. This includes, but is not limited to, measures to manage dust, erosion and spread of weeds and dieback during clearing of native vegetation.

2 Description of the Activity

2.1 Activity overview

The work will involve the mechanical clearing of vegetation, civil works, drainage and widening of a bitumen road surface the total clearing footprint for the three sites will not exceed 0.86 ha.

3 Management Measures

The management measures listed in Table 1 will be implemented during construction for this Project.

Table 1. Management Measures to be Implemented During Construction

Item	Management Measure
Extent of Clearing	<ul style="list-style-type: none"> No more than 0.86 ha of clearing is permitted at the location. Shire's survey team to demarcate clearing extent prior to clearing works to ensure approved clearing boundaries are not breached.
Flora and vegetation	<ul style="list-style-type: none"> No more than 0.86 ha of clearing is permitted at the location Clearing of vegetation will be kept to the minimum amount required
Fauna	<ul style="list-style-type: none"> Clearing of native vegetation will be undertaken in a slow, progressive manner in one direction to allow fauna to move away from the clearing area. Construction personnel will not touch, feed or otherwise directly interact with fauna. Clearing will be undertaken during daylight hours only.
Weeds	<ul style="list-style-type: none"> All vehicles and machinery will arrive clean on site. Works will be undertaken from the east to west to minimise spread of <i>Godium laevigatum</i> which is in dense thickets at the intersection of Dempster Road and Fisheries Road. Machinery used in vegetation clearing will be air cleaned with high pressure air, to remove accumulated <i>Godium laevigatum</i> seeds after clearing has been completed before removing off site. Movement of vehicles and machinery will be restricted to the area to be cleared and existing cleared areas. The Shire / Contractors will ensure that no weed-affected soil, mulch, fill or other material is brought onto the site.
Dieback	<ul style="list-style-type: none"> The RRG Fisheries Rd SLK 10.24 - 13.61 is within a dieback risk area. All vehicles and machinery will arrive clean on site. The Shire / Contractors will ensure that no dieback-affected soil, mulch, fill or other material is brought onto the site. Surface and sub-surface water are an efficient means for the spread of <i>Phytophthora</i> Dieback. To ensure the pathogen would not be spread around the site if accidentally introduced it is important to contain any surface water. Ensure drainage does not enter the site from surrounding areas

Wetlands and Streams	<ul style="list-style-type: none"> • The RRG Fisheries Rd SLK 10.24 - 13.61 is 440m from Bandy Creek. • The Shire / Contractors will ensure drainage does not enter the site from surrounding areas
Erosion	<ul style="list-style-type: none"> • Standard construction measures regarding erosion and sediment control will be implemented during construction works
Dust	<ul style="list-style-type: none"> • Standard construction dust control and mitigation measures will be implemented during clearing. This may include the use of a water trucks, or similar. • Ground disturbance and clearing of vegetation will be restricted during high winds if dust cannot be adequately controlled.
Noise	<ul style="list-style-type: none"> • The Shire and its contractors will comply with the Environmental Protection (Noise) Regulations 1997 • Within the Esperance townsite boundaries, this also includes restrictions on construction work on to any day, which is not a Sunday or Public Holiday between 7.00am - 7.00pm • Complaints regarding noise will be recorded and investigated by Shire of Esperance
Waste	<ul style="list-style-type: none"> • Rubbish will be disposed of in appropriate containers and all waste will be removed from the site.
Hydrocarbons	<ul style="list-style-type: none"> • Hydrocarbons and chemicals will be appropriately managed on site to prevent spills, including maintaining equipment in good working order in accordance with manufacturers specifications. • No refuelling will be undertaken within 100 m of a waterway, drain or drainage line. • Refuelling will be undertaken on hardstand or using catch trays only. Uncontrolled refuelling is not permitted. • Hydrocarbons will be appropriately stored at least 100 m away from drainage lines and stored in an appropriate bunded container.